

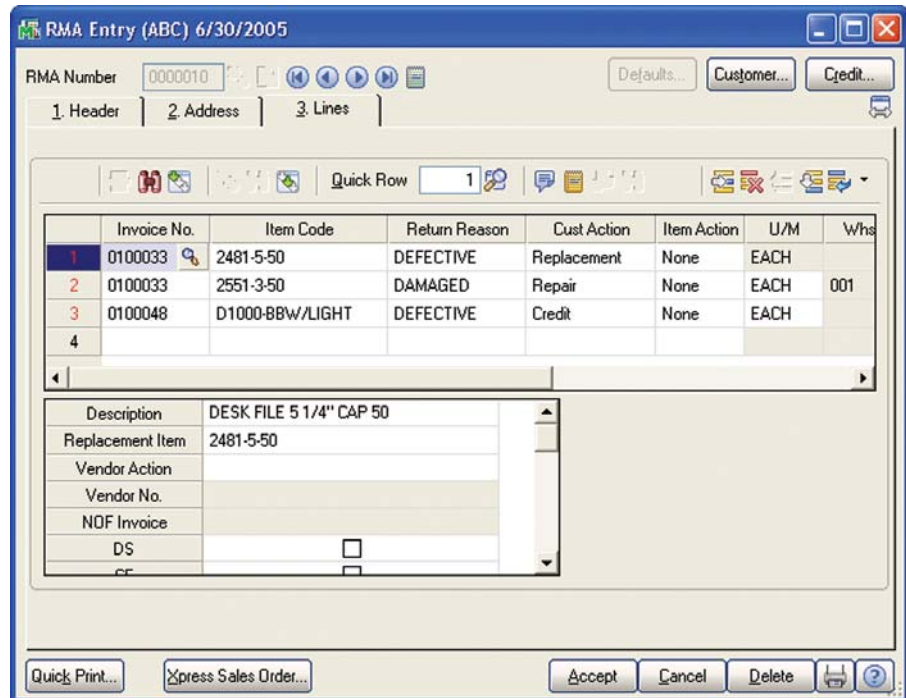


**SAGE MAS 90 SAGE MAS 200**

**RETURN MERCHANDISE AUTHORIZATION**

**REPORTS**

- Open Return Merchandise Authorization (RMA) Report
- RMA Receipts History Report
- Return Reason Report
- Daily Repair Report



To stay competitive, virtually every company needs to process customer returns. As today's customers demand a more specialized level of service, tracking and resolving these returns can be an increasing challenge. With the Sage MAS 90 and Sage MAS 200 ERP Return Merchandise Authorization module (RMA), returns and replacements can be handled with ease.

Does your customer want credit, a replacement, a substitution, or a repair? The RMA module makes it easy to handle all of this. And when a customer has an urgent replacement need, RMA even lets you easily create a cross-shipment entry. This gives you an accurate record of items shipped before returns are received, and one more opportunity to build 100 percent customer satisfaction.

With the RMA module, you can easily print or fax notifications to customers and print receiving documents to alert warehouse personnel of pending returns. After the goods are received and inspected, they can be returned to inventory, identified as items for repair, or scrapped. Then, Sage MAS 90 and 200 automatically generate all the appropriate transactions, including credit memos, replacement orders, purchase orders, and vendor returns. This complete, end-to-end solution saves hours of data entry and eliminates the need to search through file drawers for supporting historical documents.

The RMA inquiry program makes it easy to determine the status of a return—whether or not it has been received. And the Return Reason Report shows you which items have been returned, who's returning them, and why—so you can quickly identify possible problems.

Combining the RMA module with the required Sales Order and Inventory Management modules lets you offer unparalleled customer service. The optional integration of Purchase Order can maximize efficiency by automating vendor returns and new purchase orders. Working together, these modules create a completely integrated return management solution that saves time, boosts customer satisfaction, and gives you a real competitive advantage.



# Sage MAS 90 and Sage MAS 200

## Return Merchandise Authorization

*"With the RMA module, we have a smooth process flow and are more accountable to our customers. We've greatly improved our turnover and conversion rate."*

Andrew Levy, CFO  
Monarch Computer Systems, Inc.

### FEATURES

<b>Customer Actions</b>	Customers have their choice of returning items for credit, replacement, or repair. You can credit the customer's account, or apply it to a credit card. Replacement returns can be exchanged for the same item or an alternate item. A single entry marks an item for repair, and provides customer return instructions.
<b>Item Actions</b>	Actions can be assigned to each item after it is received and inspected. Items returned to stock can be sent to a return warehouse or the original selling warehouse. Unusable items can be returned to a scrap warehouse. Repair items are returned to a repair warehouse, fixed, and returned to the customer.
<b>Vendor Actions</b>	When the Purchase Order module is integrated with RMA, vendor actions of return for credit or return for replacement can be assigned to each item. Selecting these actions in RMA Receipts Entry causes the appropriate documents to be automatically created during the RMA transaction generation process.
<b>Xpress Order Entry</b>	If a customer can't wait for you to receive the return before you ship the replacement, cross shipments can be originated by clicking on the Xpress Order Entry button from within RMA Data Entry. This activates Sales Order Entry, and populates a new order with the urgently requested item.
<b>Calculate Restocking Fees</b>	Restocking fees can be assigned by inventory product line or by individual item. You can even waive restocking fees for selected customers at the time of RMA entry, giving you the utmost in flexibility.
<b>Warranty Tracking</b>	RMA automatically calculates warranty expiration dates based on Inventory Management options and warranty codes. When processing returns, the operator is alerted to any expired warranties and can opt to extend the warranty on any item.
<b>Unannounced Returns</b>	Returns may arrive at your warehouse without prior approval, on occasion. Warehouse personnel can enter these unannounced returns after inspection and easily process them through the system.
<b>Scrap and Repair Warehouses</b>	Easily track each type of return by identifying specific (actual or virtual) warehouses for returns, scrap, and repair items.
<b>RMA Inquiry</b>	You don't need to know whether an RMA is still pending or has been received in order to find it. After entering an RMA number, the program automatically determines if the RMA is open or received, and displays the requested record.
<b>Generate Transactions</b>	This powerful program uses the information entered in RMA Receipts Entry, along with historical and customer information, to create all necessary documents, including sales orders, credit memos, vendor return orders, and purchase orders.
<b>Return Reason Tracking</b>	During RMA Entry, a return reason is assigned to each line. The reasons print on the Return Reason Report to help you identify potential quality or other customer satisfaction issues.
<b>Receipts History</b>	Full receipts history is tracked and all returns can be reviewed on the Receipts History Report. You can drill down to RMA information throughout the Sales Order and Accounts Receivable modules.
<b>CRM Integration</b>	Empower your salespeople by giving them access to Sage MAS 90 and 200 RMA Inquiry directly from your integrated CRM application. They can perform status checks for customers, ensuring that everyone who speaks with a customer has instant access to all the information they need.
<b>Integration</b>	The Sales Order and Inventory Management modules are required for RMA processing, with optional integration with Purchase Order.



Accession Technology (888) 808-1117 [sales@accessiontechnology.com](mailto:sales@accessiontechnology.com) <http://www.accessiontechnology.com/>

©2005 Sage Software, Inc. All rights reserved. The Sage Software logo and the Sage Software products and service names mentioned herein are registered trademarks or trademarks of Sage Software, Inc., or its affiliated entities. All other trademarks are the property of their respective owners.

5MAS059 10/05 05-3861/1005