



General Ledger

Flexible and Easy to Implement

The adaptable design of the General Ledger module for Sage MAS 90 and Sage MAS 200 ERP systems allows you to use your current chart of accounts or create a new chart of account structure from over a dozen industry-specific selections, making implementation quick and easy. The General Ledger uses our exclusive dual grid entry for quick, efficient, and accurate data entry. The grid entry format allows you to easily customize the data entry screens. Once you have created a transaction, selecting to delete a row, move a row up or down, or change a value is easy. You can also use the built-in calculator to easily modify it, or even reset a row or all rows by using the reset feature.

Valuable Business Insights

Ease of use combined with the powerful attributes of the General Ledger module streamlines all bookkeeping and accounting transactions, and the resulting reports provide important business insights. Sage MAS 90 and 200 General Ledger offers virtually unlimited financial reporting capabilities. In addition to the standard General Ledger reports, Sage MAS 90 and 200 provide the ability to create financial statements such as Income Statements, Cash Flow Statement, Balance Sheet, and Trend reports. All financial reports are created and modified through an easy-to-use wizard so you can simply select formatting options to create a report specific to your business needs. Gaining quick and accurate insight into your business is critical to maintain your competitive edge. Sage MAS 90 and 200 General Ledger provides a key method for you to stay on top of your financial information.

REPORTS

Save your report settings for the robust General Ledger reports by user. The standard General Ledger reports include:

- General Ledger Worksheet
- General Ledger Trial Balance
- General Ledger Detail Report
- General Ledger Detail by Source Report
- Exception Report
- Reprint Journals
- Source Journal History Report
- General Ledger Graphics
- Budget and History Report
- Account Audit Report
- Account Memo Printing

In addition to the Standard General Ledger Reports, Sage MAS 90 includes a powerful Financial Report Wizard enabling you to create additional reports such as:

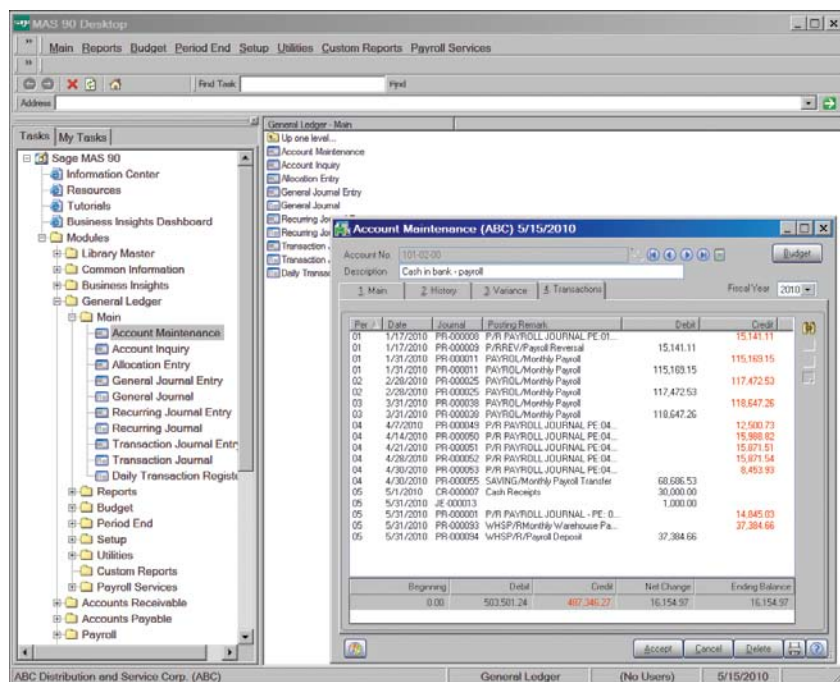
- Trend Reports
- Income Statements
- Balance Sheets
- Statement of Cash Flow Reports

Report Groups may be set up to easily identify your specific report settings. (For more information on reporting capabilities please see the Reporting Capabilities Specification Sheet.)

BUSINESS ALERTS

Business Alerts is an additional module that monitors your Sage MAS 90 database and can send e-mail notifications to appropriate staff, customers or vendors based on specific business events. Predefined General Ledger alerts included are:

- Account balance exceeds budgeted amount
- G/L expense transaction exceeds specified amount
- New G/L account added

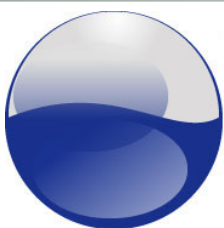


Using General Ledger, you can quickly access information in a dual grid format—this example shows information for a payroll account, under the transactions tab, displaying details in the top grid and subtotals in the lower grid.

FEATURES

Flexible Chart of Account Structure	Create an account structure to fit your business needs with up to 32 characters and 10 segments. Or choose from over a dozen industry-specific charts of accounts.
Account Status	Each general ledger account can be assigned a status—active, inactive, or deleted. Accounts with an inactive or deleted status can not be posted to.
Start/End Dates	Assign starting and ending dates to main or sub-accounts to maintain additional control over your chart of accounts structure.
Roll-Up Codes	Create up to four roll-up types and unlimited roll-up codes for additional reporting flexibility outside your chart of accounts.
Budgets	Maintain an unlimited number of budgets. Edit multiple budgets and accounts simultaneously.
Batch Entry	Create public or private batches in General Journal Entry and Transaction Journal Entry for more control over postings to your general ledger.
Flexible Accounting Periods	Provides up to 13 user-defined accounting periods in each fiscal year. You can specify ending dates for each period.
Transaction Detail Drill Down	Display detailed transactions for an account at any time, and search for transactions by period, source journal inquiry, or comment.
Multi-Year History Retention	Retain up to 99 years of transaction history and period summary history. Post to an unlimited number of future fiscal years, or reopen a past year and specify the fiscal year to be used for printing general ledger reports.
Non-Financial Accounts	Maintain non-financial information such as head count, square footage, unit sales, and inventory quantity. Include non-financial information on financial reports and in allocation calculations.
Allocation Entries	Automatically post an amount from a single-source account to multiple destination accounts. Calculate the amount to be posted to each of the destination accounts based on a percentage allocation, a quantity (such as headcount or square footage), or based on a value from another destination account.
Financial Statements	Income Statements, Balance Sheet Statements, Cash Flow Statements, and Trend reports can be produced automatically with the easy-to-use Financial Reporting wizard. Include actual budget, budget variance, and prior-year information on standard period-to-date and year-to-date income statements. Select the type of data to be printed for each column. Round dollar amounts, print dollar signs, add, delete, or copy footnotes are just a few of the options for formatting financial statements. Supports values up to \$99,999,999,999.99.
FRx Desktop	Build general ledger lists automatically and pull your accounting data directly from the application by linking with Microsoft FRx Desktop.* Take advantage of advanced financial reporting and flexible customization capabilities.
Account Masterfile Audit	Audit changes, deletions, or additions to the account masterfile using the Account Masterfile Audit report.
Delete Accounts/ Change Accounts	Easily delete or change account numbers without having to manually renumber each entry.
One Step Bank Transfers	Transfer funds between banks in one, easy transaction journal entry when integrated with the Bank Reconciliation module.

*May not be available in all bundles and promotions.



Accession Technology

(888) 808-1117

sales@accessiontechnology.com

<http://www.accessiontechnology.com/>

sage
software

Your business in mind.

©2007 Sage Software, Inc. All rights reserved. The Sage Software logo and the Sage Software product and service names mentioned herein are registered trademarks or trademarks of Sage Software, Inc., or its affiliated entities. Crystal Reports is the registered trademark and technology of Business Objects SA. All other trademarks are the property of their respective owners. 5036508 11/07 08-06206/1107